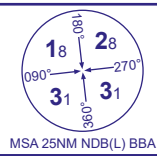


INSTRUMENT APPROACH CHART - ICAO

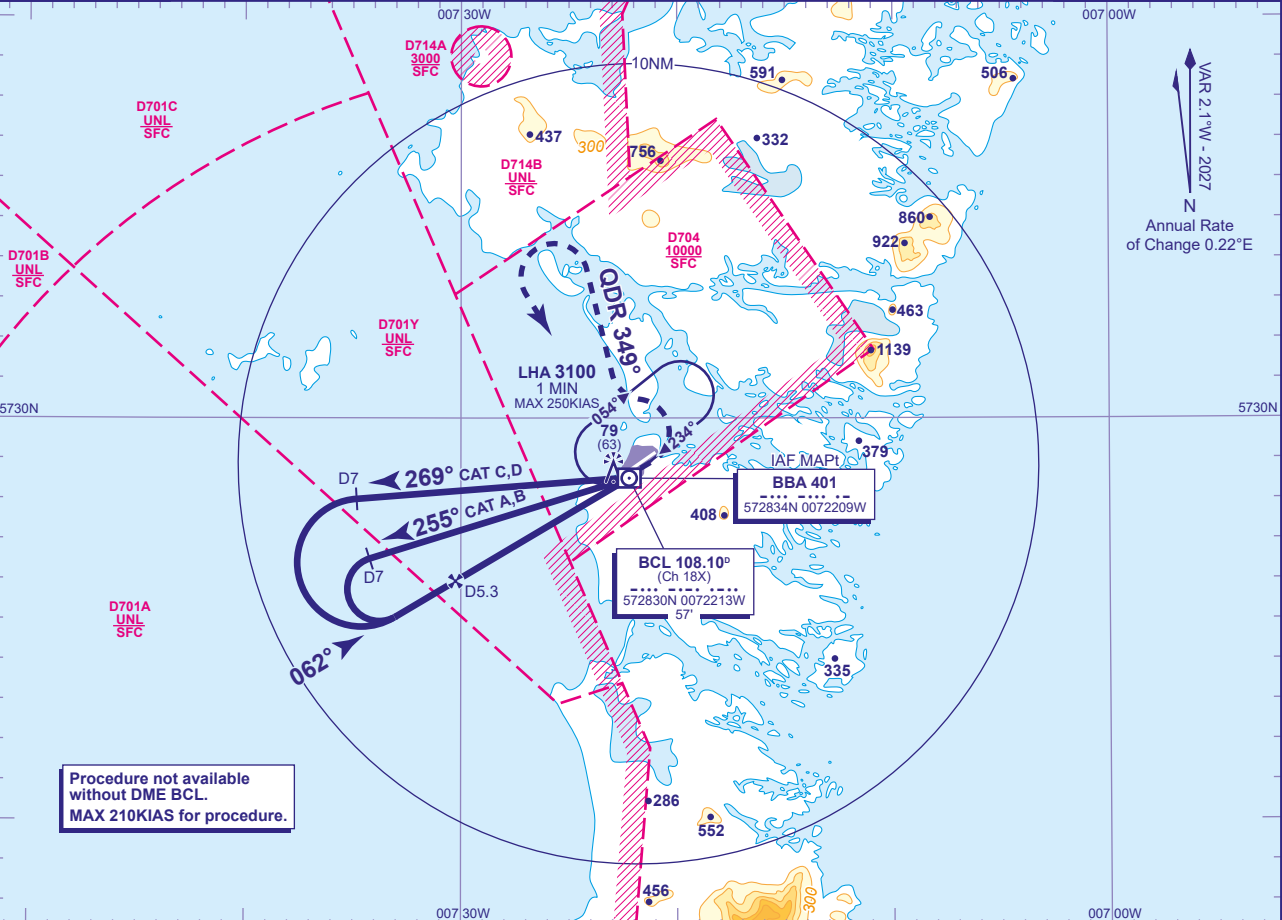
BENBECULA  
NDB(L)/DME  
RWY 06  
(ACFT CAT A,B,C,D)



MSA 25NM NDB(L) BBA

APP	119.205	BENBECULA APPROACH	AD ELEVATION	19
TWR	119.205	BENBECULA TOWER	THR ELEVATION	16
AFIS	119.205	BENBECULA INFORMATION	OBSTACLE ELEVATION	79 AMSL (63)(ABOVE THR)
ATIS	129.885	BENBECULA INFORMATION	BEARINGS ARE MAGNETIC	

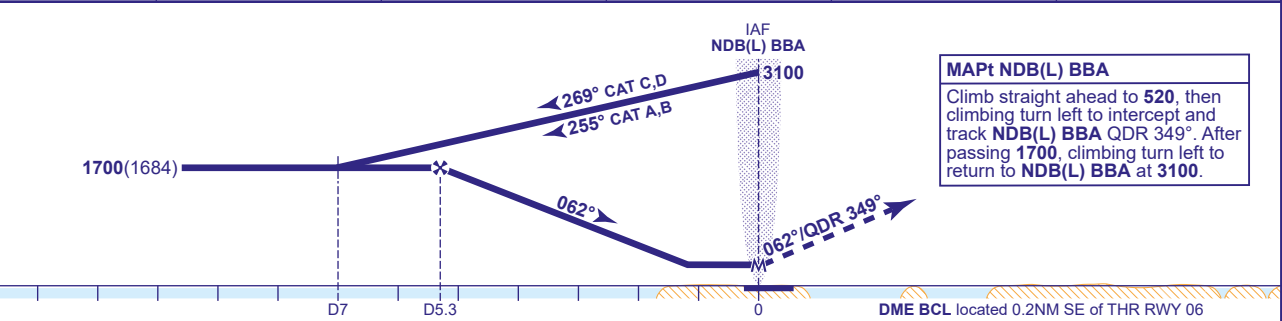
TRANSITION ALTITUDE  
3000



Procedure not available  
without DME BCL.  
MAX 210KIAS for procedure.

RECOMMENDED PROFILE Gradient 5.1%, 310FT/NM

DME BCL	5	4	3	2	1
ALT(HGT)	1610(1594)	1300(1284)	990(974)	680(664)	370(354)



**MAPt NDB(L) BBA**  
Climb straight ahead to **520**, then climbing turn left to intercept and track **NDB(L) BBA QDR 349°**. After passing **1700**, climbing turn left to return to **NDB(L) BBA** at **3100**.

Aircraft Category	A	B	C	D	Rate of descent	G/S KT	160	140	120	100	80
OCA (OCH)	Procedure	360(344)	360(344)	360(344)	360(344)	FT/MIN	830	720	620	520	410
VM(C)OCA (OCH AAL)	Total Area	470(451)	710(691)	810(791)	810(791)						

**NOTES** 1 FAT is offset 4.4° from RWY 06 C/L.  
2 Procedures interact with Danger Areas EGD701A, 701B, 701C, 701Y and EGD704. Procedure available subject to ATC permission.

CHANGE (2/26): DME BCL ELEVATION.